

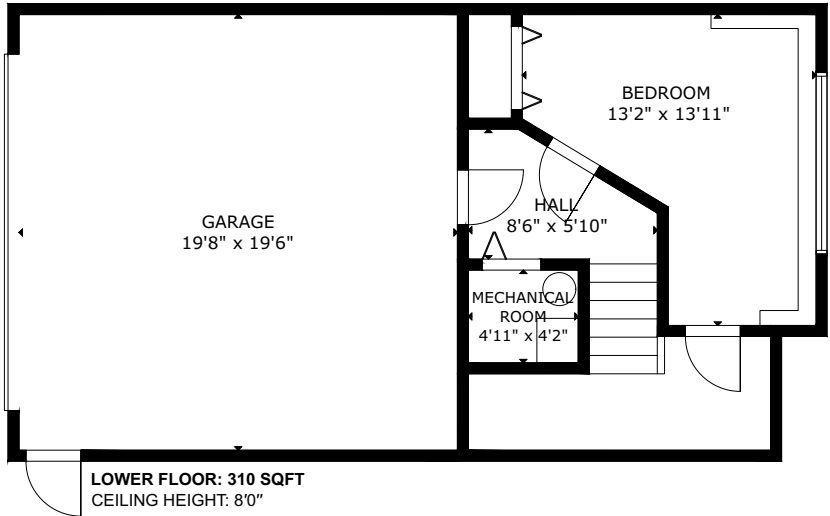
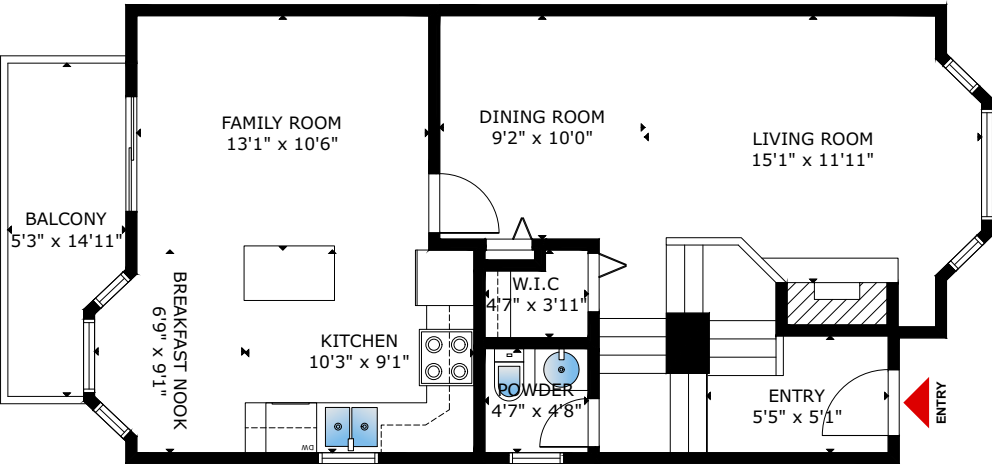
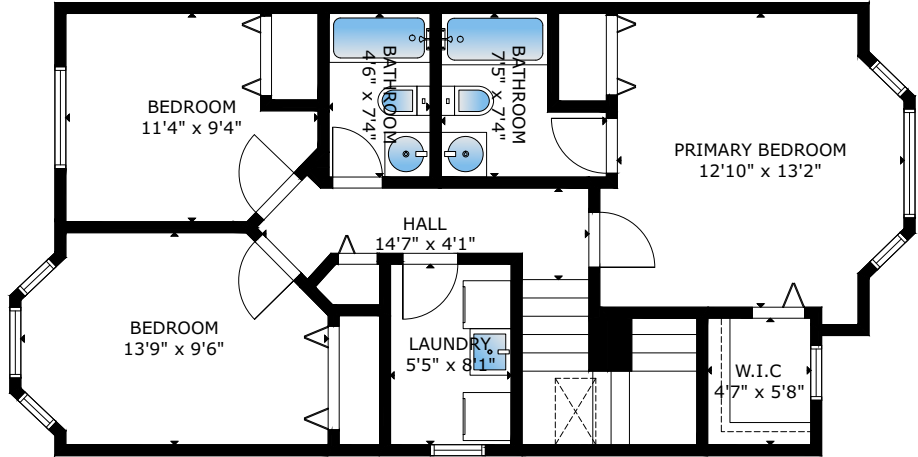
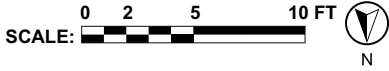
6538 121 St  
Surrey, BC V3W 1C5



Property Showcase

Created and Presented by

Project No: #1615 Date: 04.26.2025  
This floor plan is provided without warranty of any kind. The contractor disclaims any warranty including, without limitation, satisfactory quality or accuracy of dimensions. Floor plan is for visual marketing purposes and is not guaranteed.  
This enclosed information while deemed to be accurate, is not guaranteed. This announcement is not intended to solicit or induce breach of an existing agency agreement.



6538 121 STREET



ELAINE  
KAY  
REALTOR

eXp Realty  
701 W Georgia St., #1500  
Vancouver, BC V7Y 1G5

Elaine Kay, ABR®, SRES®  
Personal Real Estate Corporation  
778 990 2493  
elaine@elainekay.ca  
ElaineKay.ca

Area:	1,802 Squarefeet	Bedroom(s):	4	Bathroom(s):	3
SIZES AND DIMENSIONS ARE APPROXIMATE, ACTUAL MAY VARY					
● LIVING AREA		1,802 SQ FT			
Upper Floor		739 SQ FT			
Main Floor		753 SQ FT			
Lower Floor		310 SQ FT			
● EXTRA AREA		453 SQ FT			
Garage		383 SQ FT			
Balcony		70 SQ FT			

eXp Realty | The enclosed information, while deemed to be correct, is not guaranteed.  
This communication is not intended to cause or induce a breach of any existing agreement(s).

ELAINE  
KAY  
REALTOR

exp  
REALTY





DELIGHTFUL 4 BEDROOM FAMILY HOME

This warm and inviting 4 bedroom, 2.5 bathroom semi-detached townhouse has ample natural light with an east-to-west cross breeze that keeps every room feeling fresh and airy. The spacious main floor features a gas fireplace in an open concept living & dining area, a bright large kitchen designed for a family, with a walkout to the balcony. Upstairs, 3 comfortable bedrooms provide room for everyone, including a large primary bedroom with a walk-in closet & en suite. You'll find the 4th bedroom on the lower level and direct access to the double side-by-side garage. Enjoy a gated front yard where kids can play safely. Nestled in a friendly neighbourhood close to parks, schools, & all your everyday conveniences. This is more than a house - it's a place your family can truly call home.

<b>Interior Floor Area:</b>	1,802 SQFT	<b>Bedrooms:</b>	4
<b>Exterior Floor Area:</b>	70 SQFT	<b>Bathrooms:</b>	2 FULL, 1 POWDER
<b>Year Built:</b>	1996	<b>Parking:</b>	DOUBLE CAR GARAGE
<b>Strata Fees:</b>	\$386.44	<b>Elementary:</b>	BEAVER CREEK
<b>Taxes:</b>	\$3,493.34	<b>Secondary:</b>	TAMANAWIS

