

BARE LAND STRATA PLAN OF LOT A, DISTRICT LOTS 77 and 80, MALAHAT DISTRICT, PLAN EPP21145

Sheet 1 of 1 sheet
STRATA PLAN EPS848

BCGS 92B.063



The intended plot size of this plan is 560mm in width by 432mm in height (C size) when plotted at a scale of 1:750

LEGEND

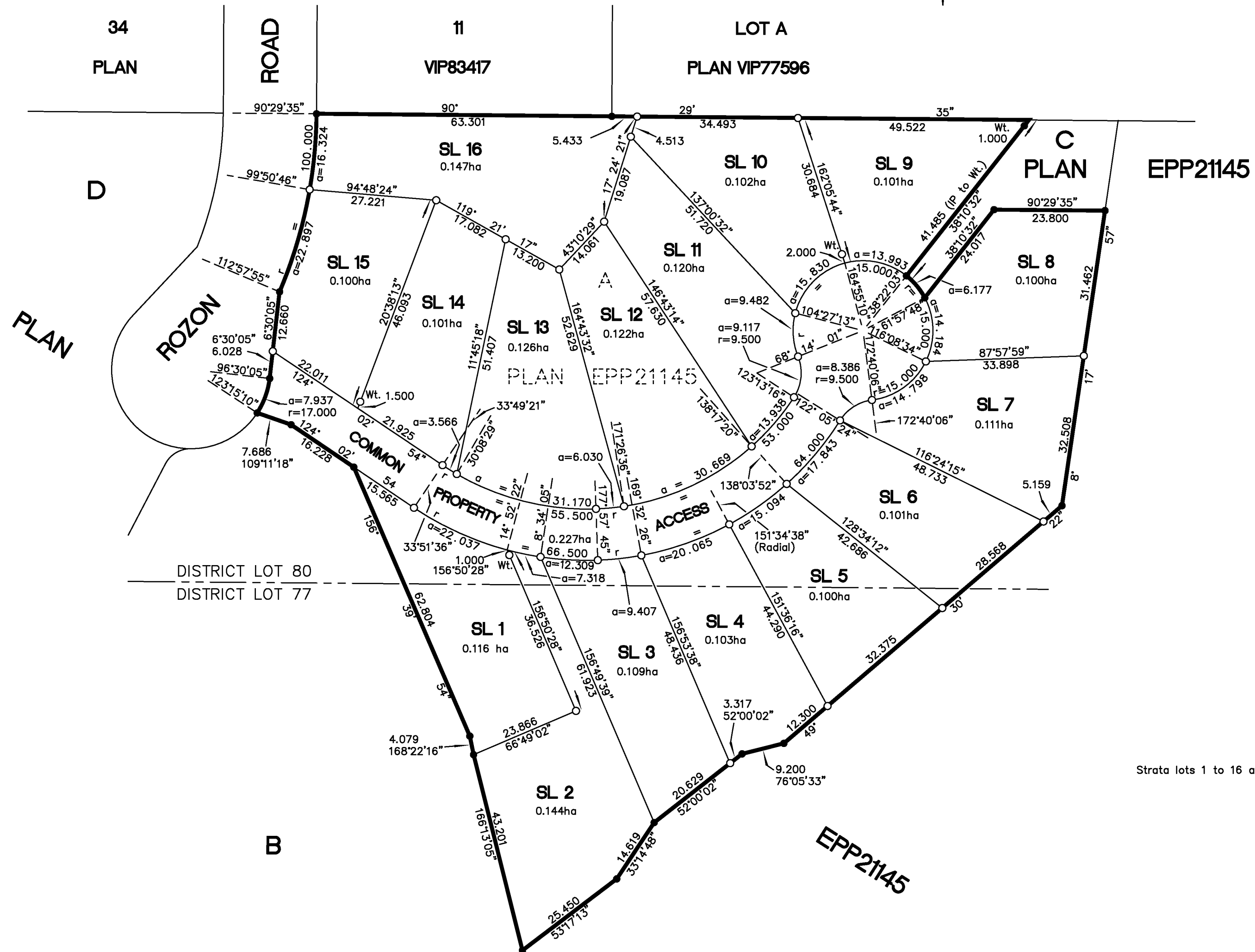
All distances are shown in metres

- Standard Iron Post set
- Standard Iron Post found
- SL denotes Strata Lot

Grid bearings derived from georeferenced Plan EPP21145

This plan shows horizontal ground-level distances unless otherwise noted. To compute grid distances multiply ground-level distances by the average combined factor of 0.99961059919

Note:
This plan show one or more witness posts which are not set on the true corner(s)



Strata lots 1 to 16 are at Rozon Road, Mill Bay, BC.

This plan lies within the Cowichan Valley Regional District and the Nanaimo/Cowichan Assessment area.

This bare land strata plan lies within the jurisdiction of the Approving Officer for the Ministry of Transportation and Infrastructure.

J.E. ANDERSON & ASSOCIATES
B.C. Land Surveyors - Consulting Engineers
Victoria, Nanaimo & Parksville, B.C. phone 250-727-2214
File : 23036

z:\PJW\Jobs2006\23036.dwg (BLS 1-1)

The field survey represented by this plan was completed on the 7th day of June, 2012.
Colin W. Grover, BCLS