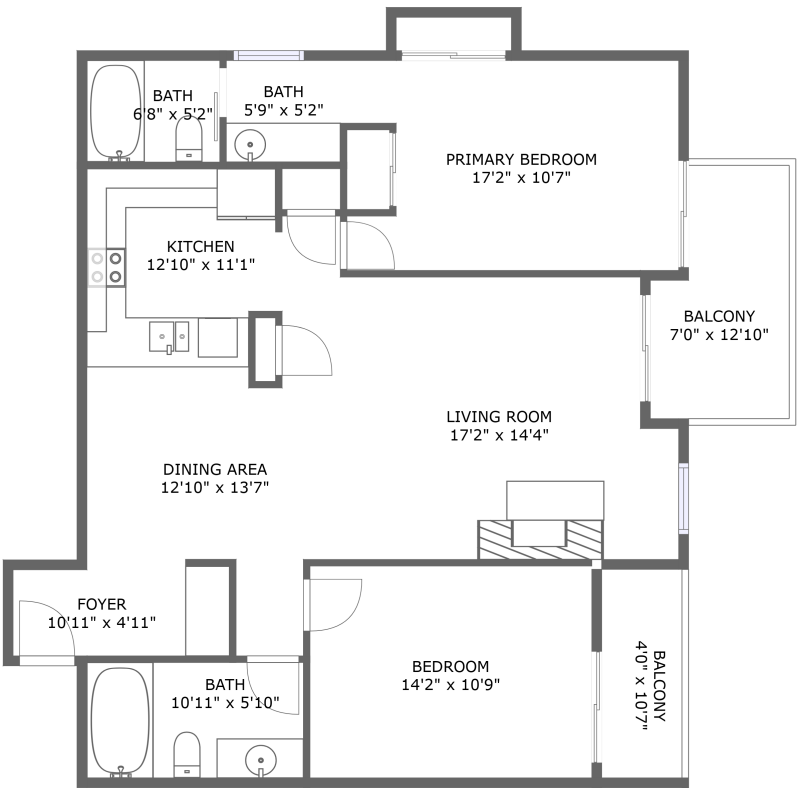


655 South Park Avenue, Breckenridge, Colorado
80424, United States, 1503 (a503)




FLOOR 1

Property summary

 **0** Garages

 **2** Bedrooms

 **2** Bathrooms

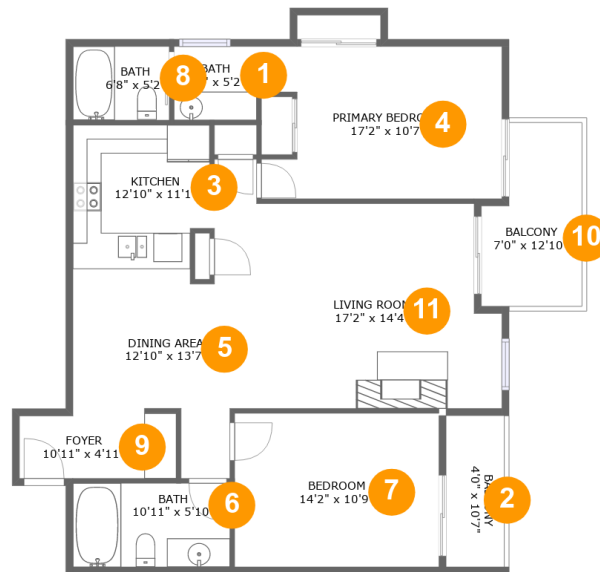
 **0** Half baths

 **1** Floors

 **1,053** Gross living area sqft

 **1,175** Total sqft

**655 South Park Avenue, Breckenridge, Colorado
80424, United States, 1503 (a503)**



Room dimensions

Floor 1

Total sqft: 1175 Living area: 1053

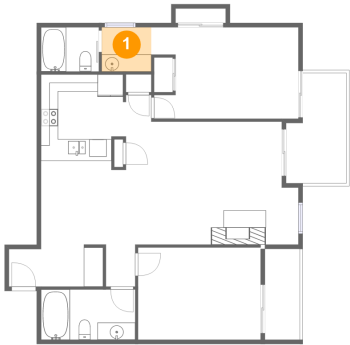
#		Dimensions	sqft	Counted as living area
1	Bath	5'9" x 5'2"	30 sq. ft	Yes
2	Balcony	4'0" x 10'7"	43 sq. ft	No
3	Kitchen	12'10" x 11'1"	134 sq. ft	Yes
4	Primary Bedroom	17'2" x 10'7"	168 sq. ft	Yes
5	Dining Area	12'10" x 13'7"	128 sq. ft	Yes
6	Bath	10'11" x 5'10"	64 sq. ft	Yes
7	Bedroom	14'2" x 10'9"	153 sq. ft	Yes
8	Bath	6'8" x 5'2"	35 sq. ft	Yes
9	Foyer	10'11" x 4'11"	51 sq. ft	Yes
10	Balcony	7'0" x 12'10"	79 sq. ft	No
11	Living Room	17'2" x 14'4"	230 sq. ft	Yes

Scan captured on Wed, 29 Jan 2025 21:39:26 GMT

Information is calculated by Cubicasa technology deemed highly reliable but not guaranteed.

655 South Park Avenue, Breckenridge, Colorado
80424, United States, 1503 (a503)

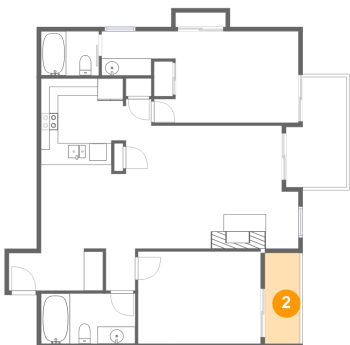
1 Floor 1 - Bath



Dimensions: 5'9" x 5'2"
Area: 30 sq. ft
Counted as living area: Yes

Heated: Yes
Finished: Yes
Enclosed: Yes
Contiguous: Yes
Permitted: Yes
Wet space: Yes
Addition: No
Conversion: No

2 Floor 1 - Balcony

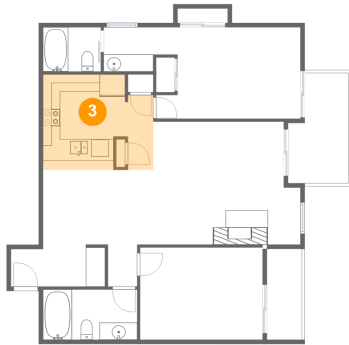


Dimensions: 4'0" x 10'7"
Area: 43 sq. ft
Counted as living area: No

Heated: No
Finished: Yes
Enclosed: No
Contiguous: Yes
Permitted: Yes
Wet space: No
Addition: No
Conversion: No

655 South Park Avenue, Breckenridge, Colorado
80424, United States, 1503 (a503)

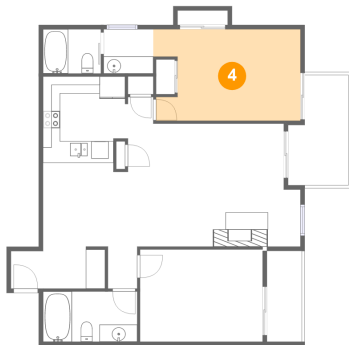
3 Floor 1 - Kitchen



Dimensions: 12'10" x 11'1"
Area: 134 sq. ft
Counted as living area: Yes

Heated: Yes
Finished: Yes
Enclosed: Yes
Contiguous: Yes
Permitted: Yes
Wet space: No
Addition: No
Conversion: No

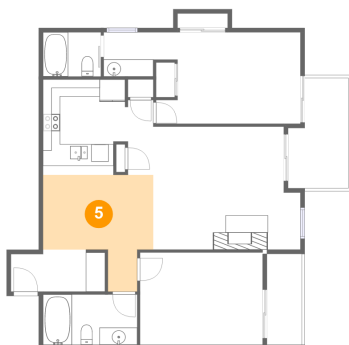
4 Floor 1 - Primary Bedroom



Dimensions: 17'2" x 10'7"
Area: 168 sq. ft
Counted as living area: Yes

Heated: Yes
Finished: Yes
Enclosed: Yes
Contiguous: Yes
Permitted: Yes
Wet space: No
Addition: No
Conversion: No

5 Floor 1 - Dining Area

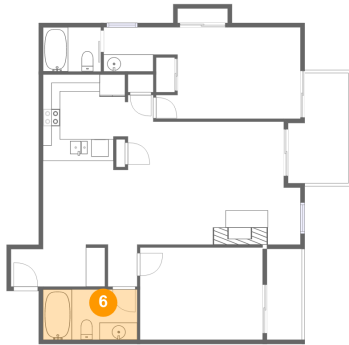


Dimensions: 12'10" x 13'7"
Area: 128 sq. ft
Counted as living area: Yes

Heated: Yes
Finished: Yes
Enclosed: Yes
Contiguous: Yes
Permitted: Yes
Wet space: No
Addition: No
Conversion: No

655 South Park Avenue, Breckenridge, Colorado
80424, United States, 1503 (a503)

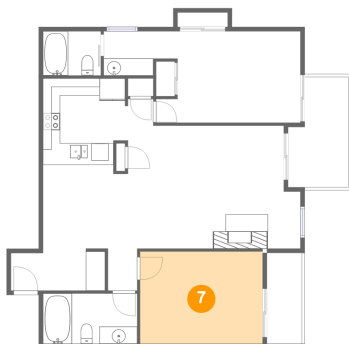
6 Floor 1 - Bath



Dimensions: 10'11" x 5'10"
Area: 64 sq. ft
Counted as living area: Yes

Heated: Yes
Finished: Yes
Enclosed: Yes
Contiguous: Yes
Permitted: Yes
Wet space: Yes
Addition: No
Conversion: No

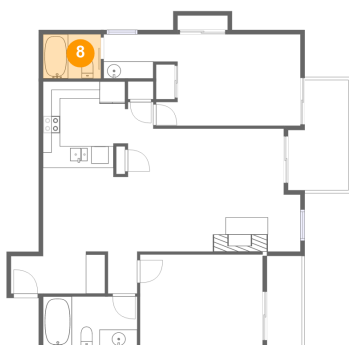
7 Floor 1 - Bedroom



Dimensions: 14'2" x 10'9"
Area: 153 sq. ft
Counted as living area: Yes

Heated: Yes
Finished: Yes
Enclosed: Yes
Contiguous: Yes
Permitted: Yes
Wet space: No
Addition: No
Conversion: No

8 Floor 1 - Bath

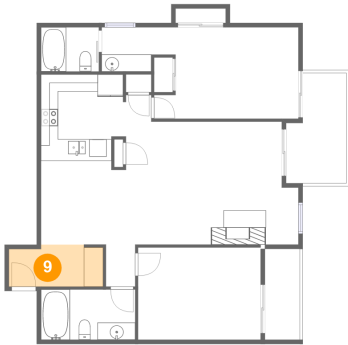


Dimensions: 6'8" x 5'2"
Area: 35 sq. ft
Counted as living area: Yes

Heated: Yes
Finished: Yes
Enclosed: Yes
Contiguous: Yes
Permitted: Yes
Wet space: Yes
Addition: No
Conversion: No

655 South Park Avenue, Breckenridge, Colorado
80424, United States, 1503 (a503)

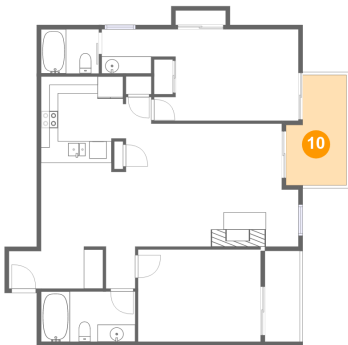
9 Floor 1 - Foyer



Dimensions: 10'11" x 4'11"
Area: 51 sq. ft
Counted as living area: Yes

Heated: Yes
Finished: Yes
Enclosed: Yes
Contiguous: Yes
Permitted: Yes
Wet space: No
Addition: No
Conversion: No

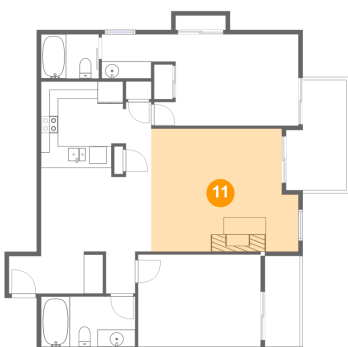
10 Floor 1 - Balcony



Dimensions: 7'0" x 12'10"
Area: 79 sq. ft
Counted as living area: No

Heated: No
Finished: Yes
Enclosed: No
Contiguous: Yes
Permitted: Yes
Wet space: No
Addition: No
Conversion: No

11 Floor 1 - Living Room



Dimensions: 17'2" x 14'4"
Area: 230 sq. ft
Counted as living area: Yes

Heated: Yes
Finished: Yes
Enclosed: Yes
Contiguous: Yes
Permitted: Yes
Wet space: No
Addition: No
Conversion: No