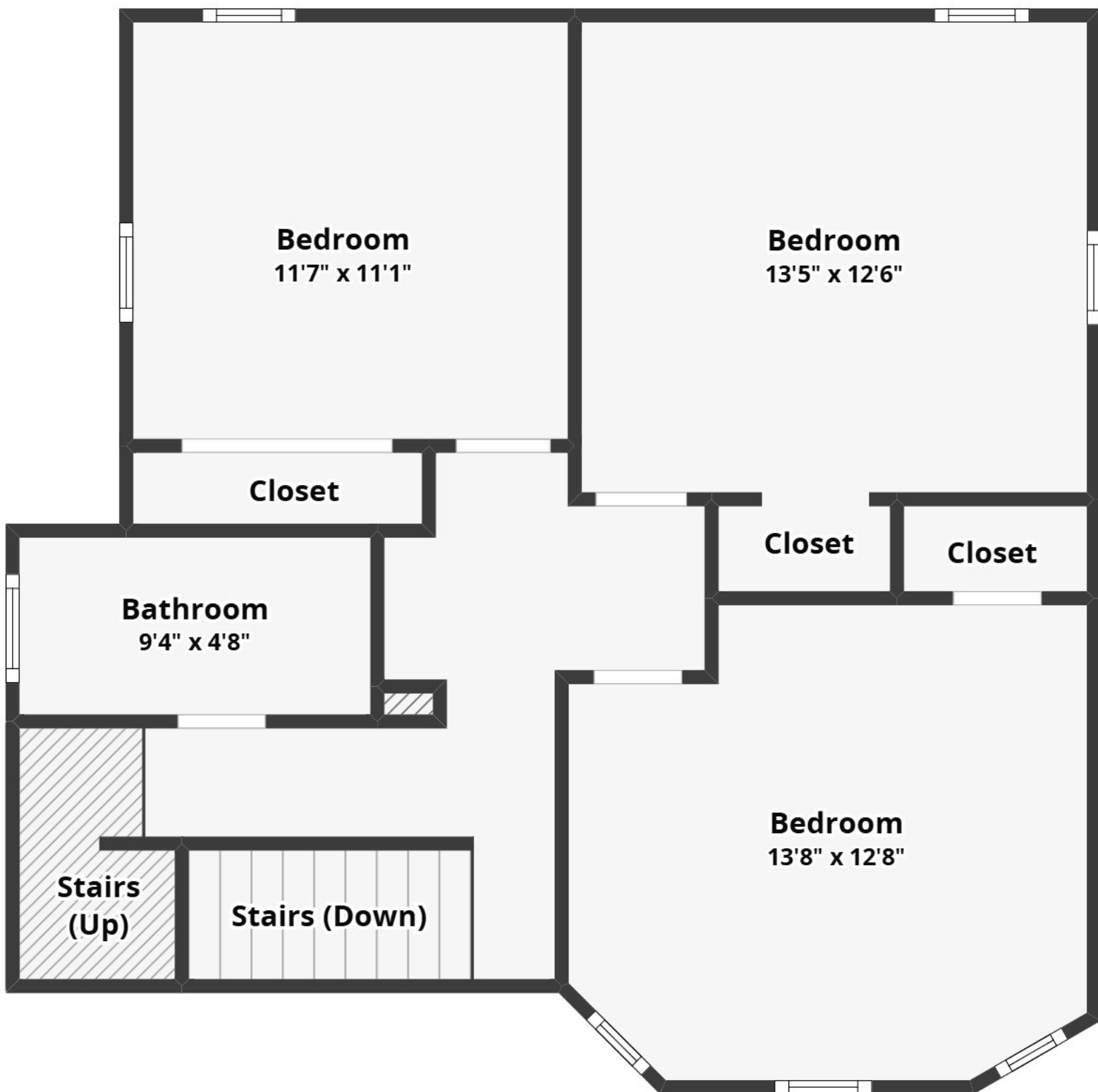
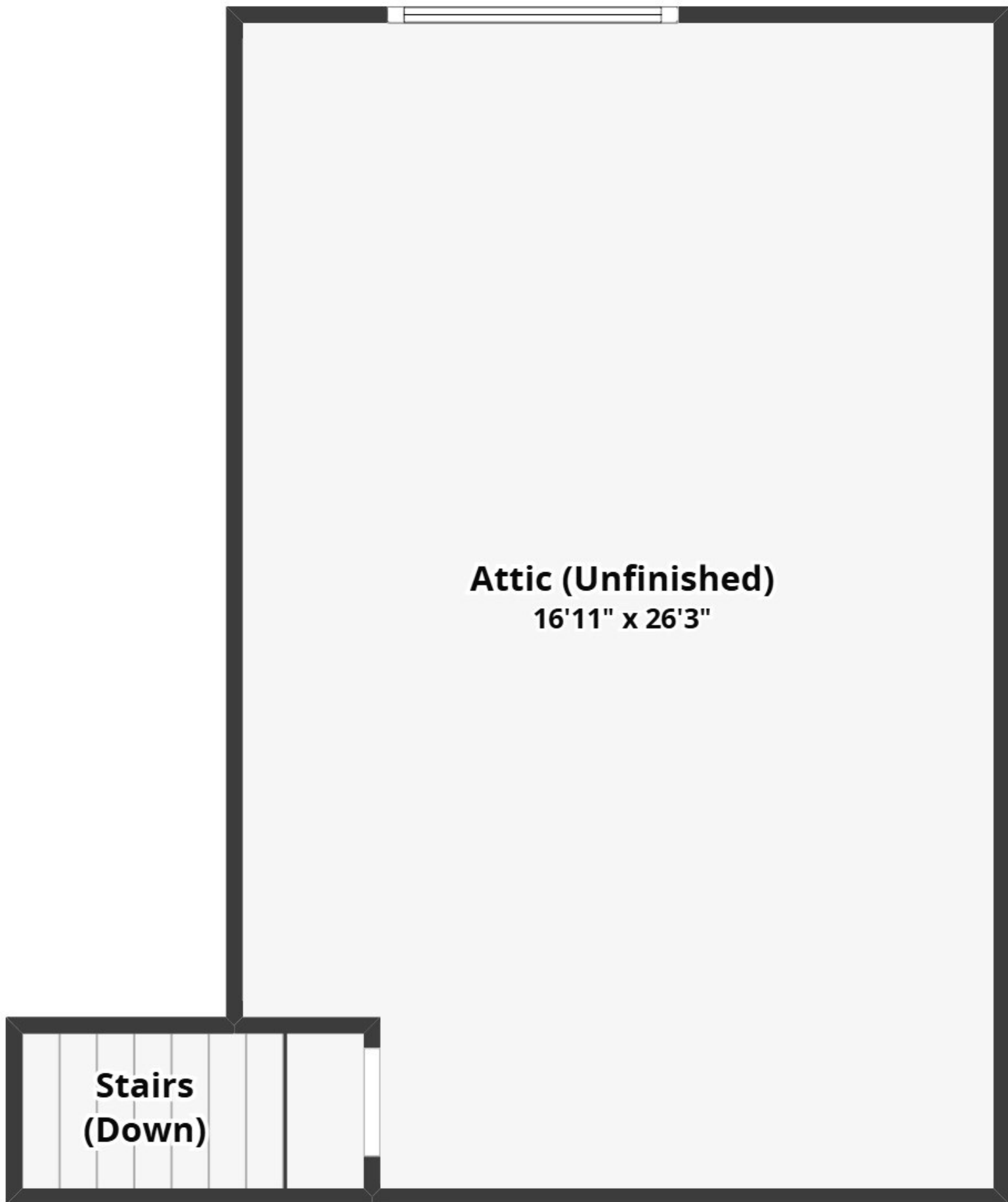


All dimensions are approximate and subject to independent verification



All dimensions are approximate and subject to independent verification



Attic (Unfinished)

16'11" x 26'3"

**Stairs
(Down)**

A floor plan of a basement level. The layout includes a staircase at the top left, and four rectangular rooms of varying sizes. The rooms are labeled with their dimensions. The plan shows walls, doors, and windows. The staircase is located at the top left, with a door leading into the first room. The first room is on the left side. The second room is in the center. The third room is on the bottom left. The fourth room is on the bottom right. The plan also shows a small alcove at the top right and a small room at the bottom right. The overall shape is irregular, with several corners and a small protrusion at the top right.

Stairs (Up)

**Basement
(Unfinished)**
6'2" x 14'6"

Basement (Unfinished)
19'9" x 22'11"

**Basement
(Unfinished)**
6'11" x 12'8"

Basement (Unfinished)
13'1" x 9'1"