



# 311 33668 KING RD, ABBOTSFORD - MLS R2941304



**Jeremy Bator**

Realtor®

778.227.1231

E [jeremybator@housesigma.com](mailto:jeremybator@housesigma.com)

W [jeremybator.com](http://jeremybator.com)



311 33668 King Rd  
Abbotsford, BC V2S 7P8



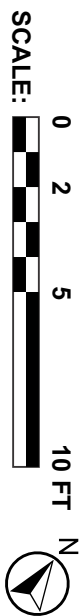
Property Showcase

Living Area: <b>834</b> Squarefeet	Bedroom(s): <b>1</b>
Extra Area: <b>72</b> Squarefeet	Bathroom(s): <b>1</b>

- **LIVING AREA** 834 SQ FT
  - Main Floor 834 SQ FT
  - **EXTRA AREA** 72 SQ FT
  - Balcony 72 SQ FT
- SIZES AND DIMENSIONS ARE APPROXIMATE. ACTUAL MAY VARY

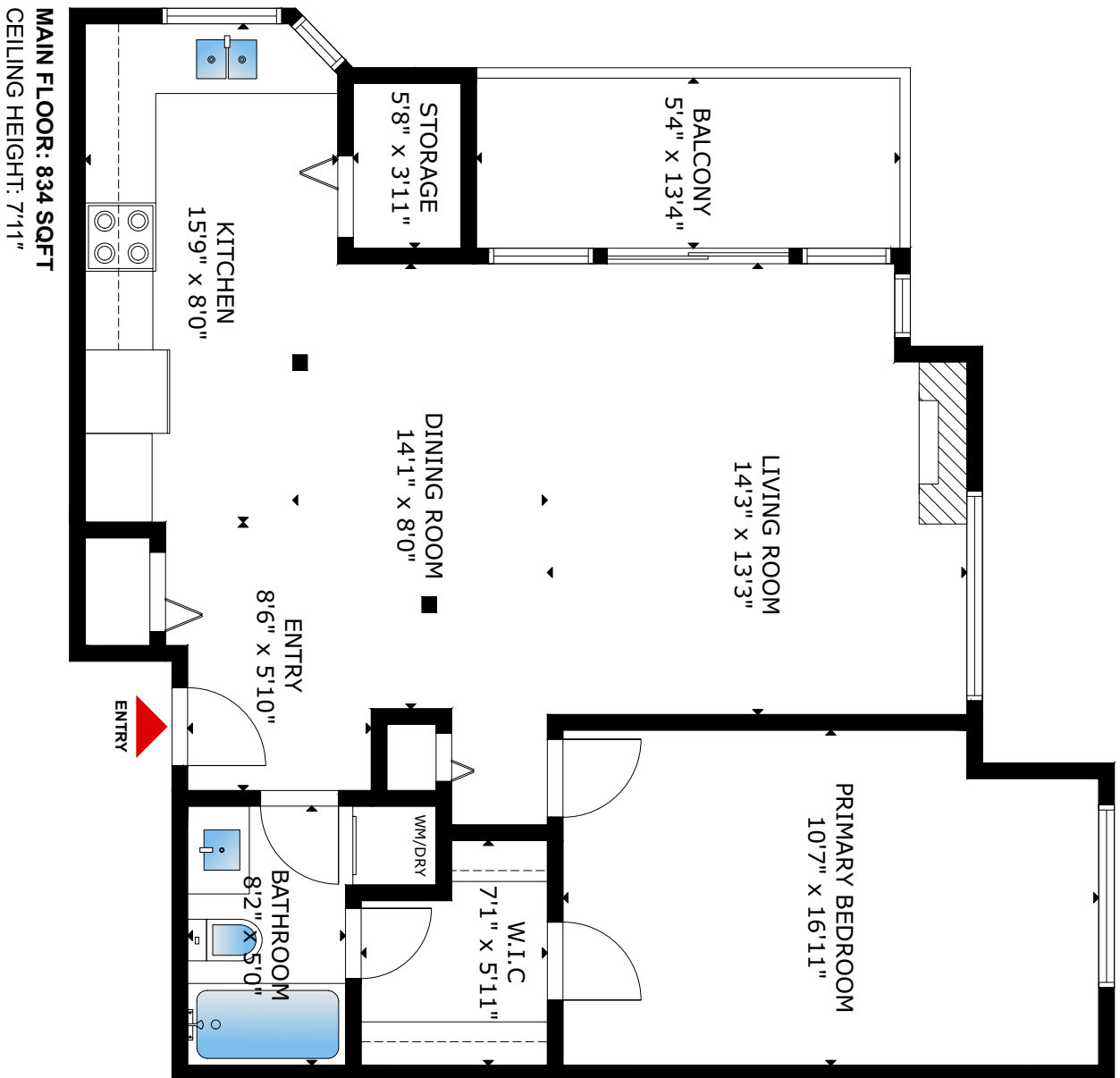


**Jeremy Bator**  
Realtor®  
HouseSigma  
778.227.1231  
E [jeremybator@housesigma.com](mailto:jeremybator@housesigma.com)  
W [jeremybator.com](http://jeremybator.com)



Captured and Presented by  
**RealtyShot**

Project No: #1396 Date: 11.02.2024  
This floor plan is a visual representation of the property and does not constitute an offer of real estate. The information is provided for informational purposes only and is not guaranteed. The enclosed information while deemed to be accurate, is not guaranteed. This environment is not intended to solicit or induce the purchase of real property.







Area: **834** Squarefeet 

Bedrooms: **1** 

Bathrooms: **1** 










Kitchens: **1** 

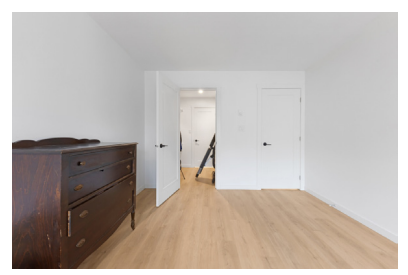
**311 33668 KING RD  
ABBOTSFORD, BC V2S 7P8**

Property Type ..... Single Family  
 Building Type ..... Condo  
 Square Footage ..... 834 sqft  
 Built in ..... 1994  
 Taxes ..... \$4,712  
 garage spaces ..... 2

**DESCRIPTION:**

Welcome to College Park in Abbotsford's dynamic U-District! This beautifully updated 834 sq ft corner unit offers 1 bed, 1 bath, and a cozy gas fireplace within a spacious, open-concept design blending modern style with homey comforts. Enjoy an oversized wraparound balcony, an updated kitchen with quartz countertops, stainless steel appliances, and upgraded LED lighting. Freshly painted with new flooring and an updated bathroom, this move-in-ready unit includes 2 parking stalls. The building offers a guest suite for visiting friends or family. Just minutes from UFV, Abbotsford Sports and Entertainment Centre, local shops, cafes, and restaurants, with easy access to Hwy #1, it's ideal for a vibrant yet comfortable lifestyle!

 REFRIGERATOR	 STOVE	 MICROWAVE
 DISHWASHER	 WASHING MACHINE	 DRYER
 GUEST SUITE	 FIREPLACE	 PARKING



**Jeremy Bator**  
REALTOR®



778.227.1231

www.jeremybator.com

jeremybator@housesigma.com