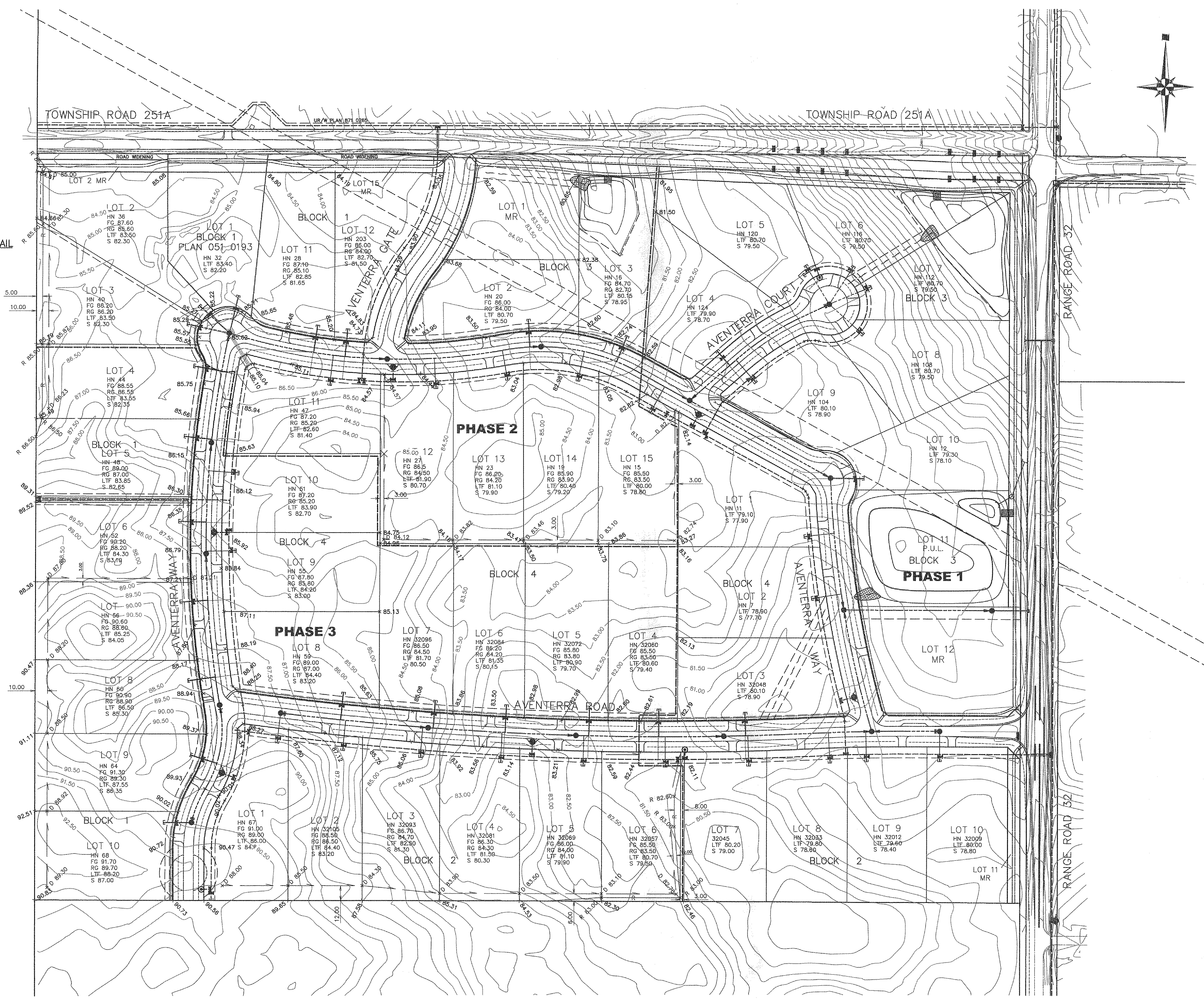


REROUTING OF SEWER DETAIL



- NOTES
- Plans were subject to the development agreement.
 - All services were located 10m from side property line unless otherwise noted.
 - All services are 6.5m inside the property unless otherwise noted.
 - All water Services are 40mm pex SDR 9 unless otherwise noted.
 - All sanitary Services are 100mm PVC SDR 28.
 - Weeping tile sump and pump to surface for all lots.
 - Service connections were installed in accordance with 2005 Waterworks Specifications, DWG No. 453.1003.001.

- HYDRANT
- LOT 10 LOT NUMBER
- HN 112 HOUSE NUMBER
- FG 87.20 SUGGESTED FRONT GRADE
- RG 85.20 SUGGESTED REAR GRADE
- LTF 79.96 LOWEST TOP OF FOOTING
- S 79.20 SANITARY SERVICE INV
- - - DITCH/SWALE
- R RIDGE

AS BUILT

No.	DATE	DESCRIPTION	BY
5			
4	14Sept11	ADDED FRONT & REAR GRADES & SWALES	R.A.P.
3	21May15	ASBUILT	R.B.
2	15.12.14	ASBUILT LOT CORNER GRADES	R.B.
1	15.2.07	REVISED LTF AND SANITARY TIE IN ELEVATIONS	S.W.

No.	DRAWING STATUS	DATE	APP.
4	AS-BUILT		
3	FOR CONSTRUCTION		
2	FOR TENDER		
1	PERMUNARY APPROVAL		

PERMIT PERMIT TO PRACTICE JUBILEE ENGINEERING CONSULTANTS LTD. Signature: <i>[Signature]</i> Date: <i>September 15, 2011</i> PERMIT NUMBER: P 3550 The Association of Professional Engineers and Geoscientists of Alberta	STAMP
---	-----------

CLIENT	1462560 ALBERTA LTD.
TITLE	AVENTERRA ESTATES ROCKY VIEW COUNTY BUILDING GRADE PLAN PHASE 2 & 3

JUBILEE ENGINEERING CONSULTANTS LTD MUNICIPAL ENGINEERING • INDUSTRIAL, COMMERCIAL & RESIDENTIAL LAND DEVELOPMENT • PLANNING & ENGINEERING SURVEYS	DESIGN BY: D.V. DRAWN BY: D.V. CHECKED BY: H.M. DATE: MAY 2005 SCALE: 1:1500 JOB NUMBER: 13-119 DRAWING NUMBER:
--	---