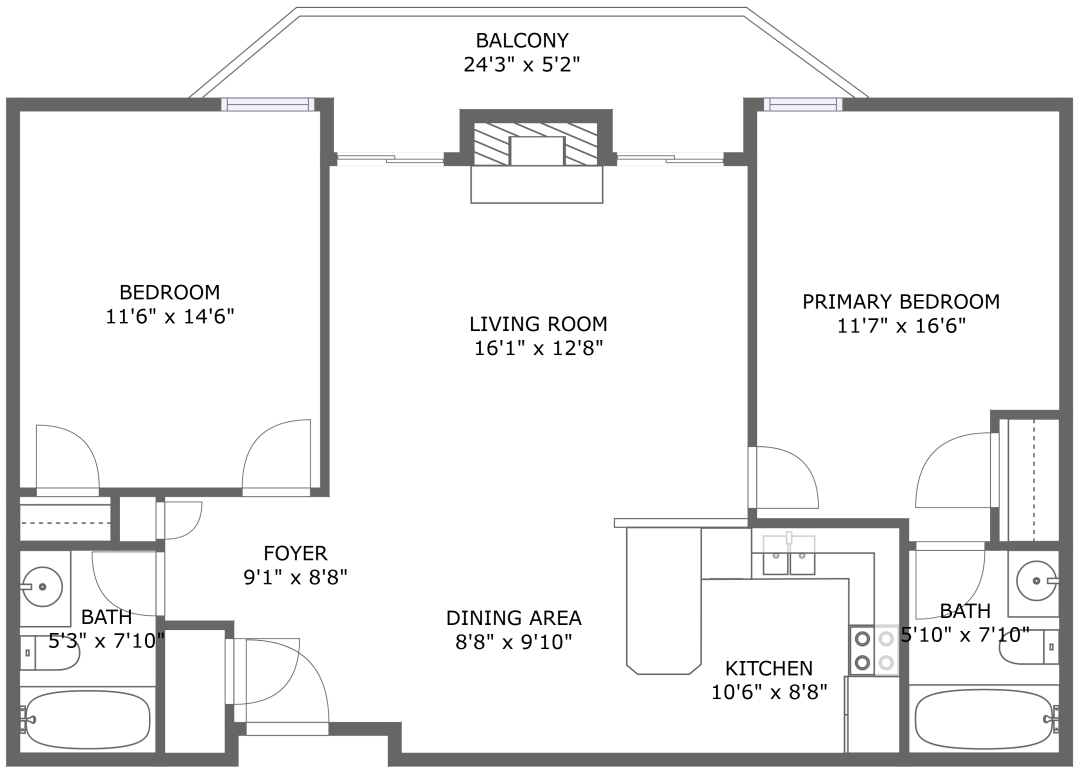




89200 Ryan Gulch Road, Silverthorne, Colorado
80498, United States, bb306





FLOOR 1

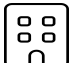
Property summary


 **0** Garages


 **2** Bedrooms

 **2** Bathrooms

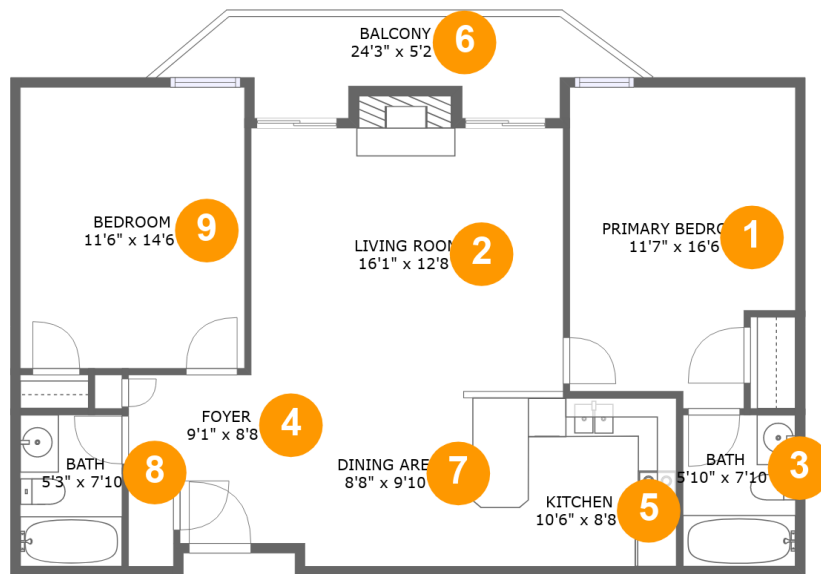
 **0** Half baths

 **1** Floors

 **949** Gross living area sqft

 **1,049** Total sqft

**89200 Ryan Gulch Road, Silverthorne, Colorado
80498, United States, bb306**



Room dimensions

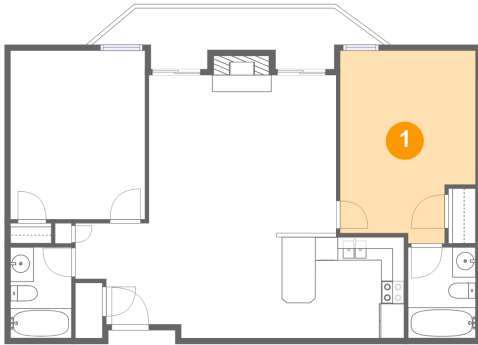
Floor 1

Total sqft: 1049 Living area: 949

#		Dimensions	sqft	Counted as living area
1	Primary Bedroom	11'7" x 16'6"	174 sq. ft	Yes
2	Living Room	16'1" x 12'8"	213 sq. ft	Yes
3	Bath	5'10" x 7'10"	45 sq. ft	Yes
4	Foyer	9'1" x 8'8"	69 sq. ft	Yes
5	Kitchen	10'6" x 8'8"	97 sq. ft	Yes
6	Balcony	24'3" x 5'2"	90 sq. ft	No
7	Dining Area	8'8" x 9'10"	86 sq. ft	Yes
8	Bath	5'3" x 7'10"	41 sq. ft	Yes
9	Bedroom	11'6" x 14'6"	168 sq. ft	Yes

89200 Ryan Gulch Road, Silverthorne, Colorado
80498, United States, bb306

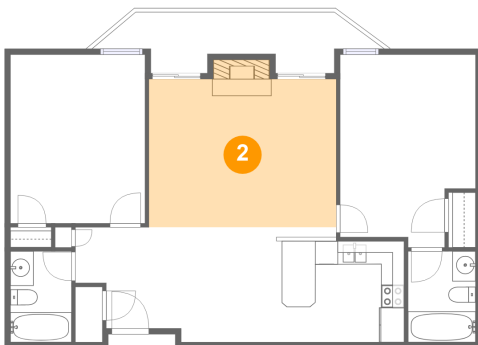
1 Floor 1 - Primary Bedroom



Dimensions: 11'7" x 16'6"
Area: 174 sq. ft
Counted as living area: Yes

Heated: Yes
Finished: Yes
Enclosed: Yes
Contiguous: Yes
Permitted: Yes
Wet space: No
Addition: No
Conversion: No

2 Floor 1 - Living Room

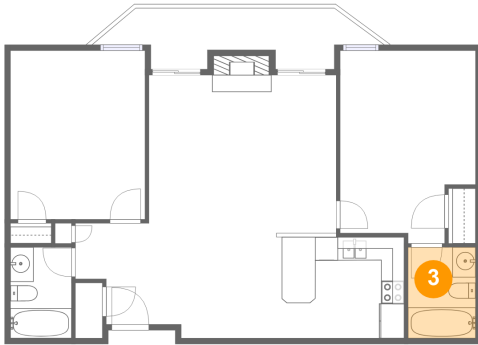


Dimensions: 16'1" x 12'8"
Area: 213 sq. ft
Counted as living area: Yes

Heated: Yes
Finished: Yes
Enclosed: Yes
Contiguous: Yes
Permitted: Yes
Wet space: No
Addition: No
Conversion: No

89200 Ryan Gulch Road, Silverthorne, Colorado
80498, United States, bb306

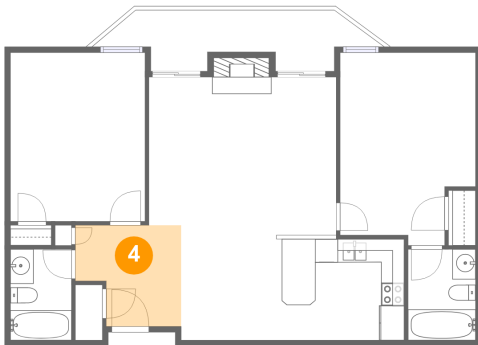
3 Floor 1 - Bath



Dimensions: 5'10" x 7'10"
Area: 45 sq. ft
Counted as living area: Yes

Heated: Yes
Finished: Yes
Enclosed: Yes
Contiguous: Yes
Permitted: Yes
Wet space: Yes
Addition: No
Conversion: No

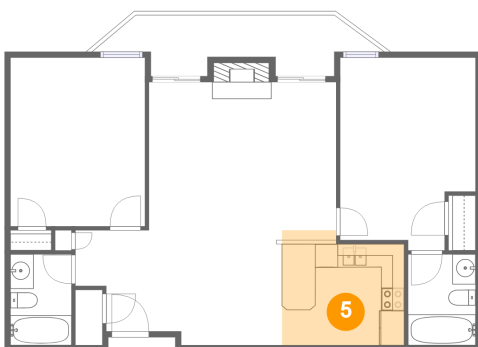
4 Floor 1 - Foyer



Dimensions: 9'1" x 8'8"
Area: 69 sq. ft
Counted as living area: Yes

Heated: Yes
Finished: Yes
Enclosed: Yes
Contiguous: Yes
Permitted: Yes
Wet space: No
Addition: No
Conversion: No

5 Floor 1 - Kitchen

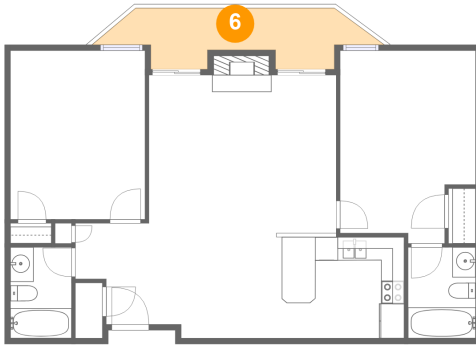


Dimensions: 10'6" x 8'8"
Area: 97 sq. ft
Counted as living area: Yes

Heated: Yes
Finished: Yes
Enclosed: Yes
Contiguous: Yes
Permitted: Yes
Wet space: No
Addition: No
Conversion: No

89200 Ryan Gulch Road, Silverthorne, Colorado
80498, United States, bb306

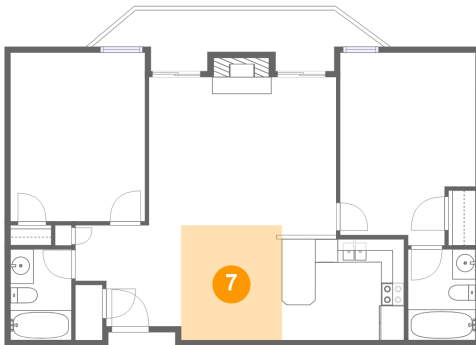
6 Floor 1 - Balcony



Dimensions: 24'3" x 5'2"
Area: 90 sq. ft
Counted as living area: No

Heated: No
Finished: Yes
Enclosed: No
Contiguous: Yes
Permitted: Yes
Wet space: No
Addition: No
Conversion: No

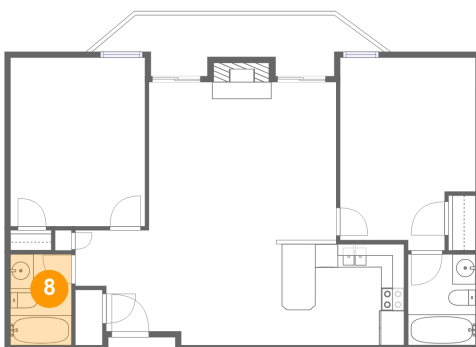
7 Floor 1 - Dining Area



Dimensions: 8'8" x 9'10"
Area: 86 sq. ft
Counted as living area: Yes

Heated: Yes
Finished: Yes
Enclosed: Yes
Contiguous: Yes
Permitted: Yes
Wet space: No
Addition: No
Conversion: No

8 Floor 1 - Bath

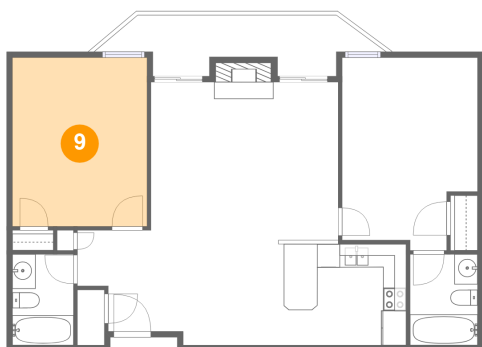


Dimensions: 5'3" x 7'10"
Area: 41 sq. ft
Counted as living area: Yes

Heated: Yes
Finished: Yes
Enclosed: Yes
Contiguous: Yes
Permitted: Yes
Wet space: Yes
Addition: No
Conversion: No

**89200 Ryan Gulch Road, Silverthorne, Colorado
80498, United States, bb306**

9 Floor 1 - Bedroom



Dimensions: 11'6" x 14'6"
Area: 168 sq. ft
Counted as living area: Yes

Heated: Yes
Finished: Yes
Enclosed: Yes
Contiguous: Yes
Permitted: Yes
Wet space: No
Addition: No
Conversion: No