



70 11737 236 ST, MAPLE RIDGE, BC V2X 6W2



Dallas Seckler
Realtor®, PREC*
778.885.4415
E dallas.seckler@exprealty.com
W dallas.seckler.exprealty.com
*Personal Real Estate Corporation

exp™
REALTY
OPTIMAL GROUP

\$749,000
MLS® Number: R3011720

SCALE: 0 2 5 10 FT

Captured and Presented by
RealtyShot

Project No: #1689 Date: 06.04.2025
This Real Estate is provided without warranty of any kind. The accuracy or accuracy of any information, including, without limitation, satisfactory quality and is not guaranteed. This enclosed information while deemed to be accurate, is not intended to be used as a basis for any decision. The enclosed information is not intended to be used as a basis for any decision.



Property Showcase

70 11737 236 ST
Maple Ridge, BC V2X 6W2

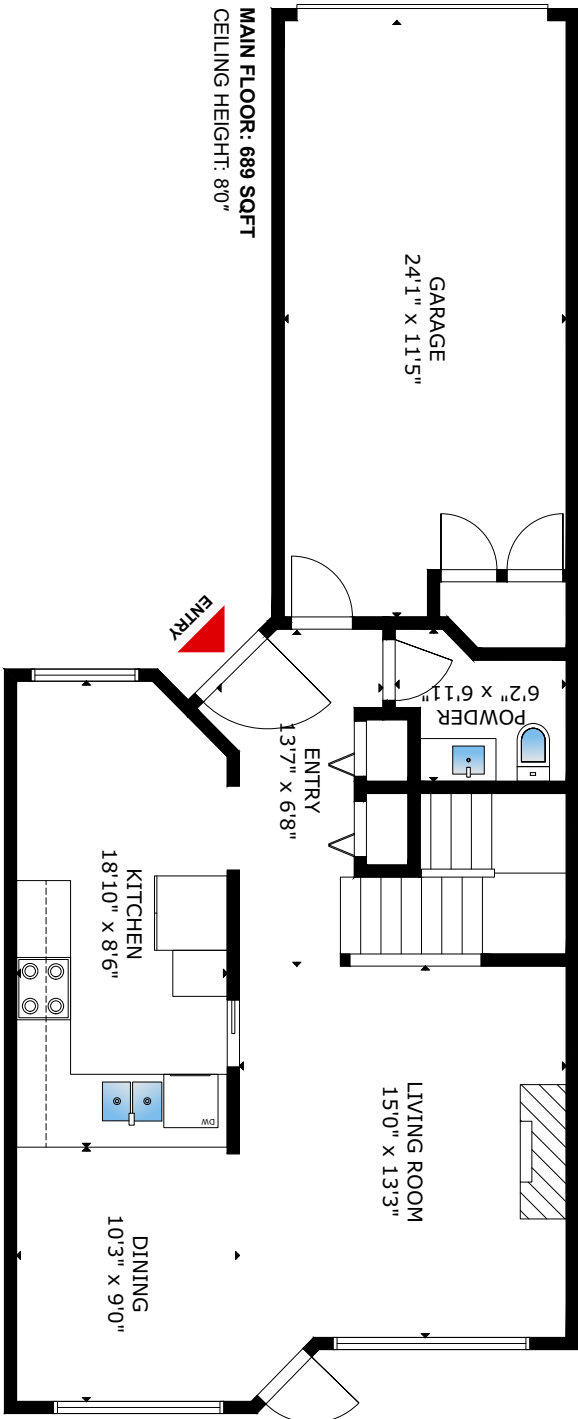
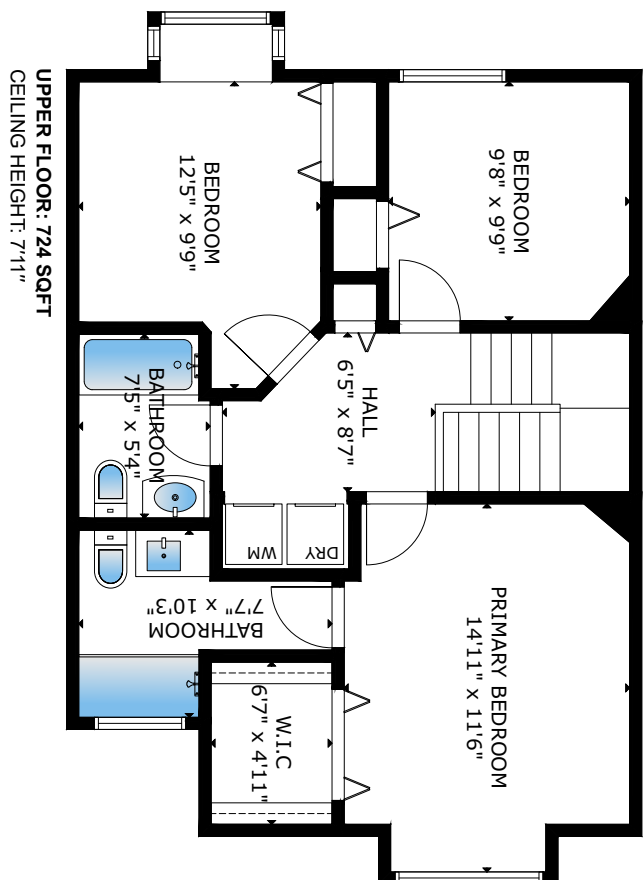
Living Area 1,413 Squaresfeet	Bedroom(s): 3
Extra Area: 280 Squaresfeet	Bathroom(s): 3

● LIVING AREA	1,413 SQ FT
Upper Floor	724 SQ FT
Main Floor	689 SQ FT
● EXTRA AREA	280 SQ FT
Garage	280 SQ FT

SIZES AND DIMENSIONS ARE APPROXIMATE, ACTUAL MAY VARY



Dallas Seckler
Realtor®, PREC*
778.885.4415
E dallas.seckler@exprealty.com
W dallas.seckler.exprealty.com
*Personal Real Estate Corporation





Area:

1,413

Squarefeet



Bedrooms:

3



Bathrooms:

3



Parking(s):

2



70 11737 236 ST
MAPLE RIDGE, BC V2X 6W2

Property Type Single Family Building
Type Townhouse
Square Footage 1,413 SQFT
Built in 1994
Taxes \$4,209

DESCRIPTION:

OPTIMAL Cottonwood location, perfect for growing families & down-sizers. This home is at the end of a quiet no through road in the highly desirable & rarely available Maplewood Creek. This 3 bed / 3 bath townhome is over 1400SQFT with updated kitchen appliances, fresh paint throughout & renovated bathrooms. The large primary bedroom has a great walk in closet and its own ensuite. You will love the layout of your new home with an open concept kitchen, breakfast bar, large eating area and a separate dinning space that leads out to your 500 sqft partially covered patio. This family friendly neighbourhood has an amazing sense of community, is close to great schools, parks, fields, trails, shopping and more.



Dallas Seckler

Realtor®, Personal Real Estate Corporation


DALLAS SECKLER
OPTIMAL REAL ESTATE SERVICE


OPTIMAL GROUP


exp
REALTY

778.885.4415

www.dallasseckler.exprealty.com

dallas.seckler@exprealty.com